

Freddie Mac Income Calculator



October 2025 Release Notes

The October 11, 2025 Freddie Mac Income Calculator release includes the following enhancements:

- Updates to the Paystub Data Entry screen that provide more opportunities to calculate income for borrowers with fluctuating and hourly income and support improved calculations.
- Improved calculations when year-end paystubs are provided, particularly for variable income including bonus, overtime and commission.
- New column in the payroll data entry to help identify auto-classified income entries.
- New in-tool popups that provide greater transparency earlier in the calculator submission.
- An additional recent paystub can be used as a substitute for pay dates and pay frequency if they are not present on the paystub.
- The ability for third-party originators (TPOs) to view representation and warranty (R&W) relief eligibility.
- New feedback messages to provide more insight when income can't be calculated.

Freddie Mac Learning materials in support of Freddie Mac Income Calculator will be updated to reflect these enhancements on October 13, 2025.

Updates to the Paystub Data Entry Screen

We've made the following updates to the Paystub Data Entry screen:

1. New "Not on paystub" option: This checkbox has been added as an option for Paystub Start Date, Paystub End Date, Pay Date and Pay Frequency.
2. New "Pay Type" field: This new field has been added and "Not on paystub" is available as an option.

Aspen Tech Paystub

Please fill out using information from the paystub only.

☐ Year-end Paystub

Paystub Start Date * ☐ Not on paystub ☐ Paystub End Date * ☐ Not on paystub ☐ Pay Date * ☐ Pay Frequency * ☐ Not on paystub

Pay Type * ☐ Not on paystub

Auto-classify ☐ ON ☒ OFF

Income Type * Earnings Description Current Period Amount Year to Date Amount *

No records found.



- Additionally, when Pay Type is selected as “Not on Paystub”, “Hourly” or “Other” two new fields appear:
 - Base Pay Hourly Rate
 - Hours

“Not on Paystub” is an option for each of these new fields.

Aspen Tech Paystub

Please fill out using information from the paystub only.

☐ Year-end Paystub

Paystub Start Date * ☐ Not on paystub

Paystub End Date * ☐ Not on paystub

Pay Date *

Pay Frequency *

Not on paystub ☒

Pay Type * ☐ Not on paystub

Base Pay Hourly Rate * ☐ Not on paystub

Auto-classify ☐ ON ☒ OFF

Income Type * ☐ Not on paystub

Earnings Description

Hours * ☐ Not on paystub

Current Period Amount

Year to Date Amount *

BUILD PAYSTUB

No records found.

ADD TO CALCULATION **CANCEL**

- Lastly, a new column has been added to the Paystub Data Entry screen to denote auto-classified income entries.

INCOME TYPE	AUTO-CLASSIFY	EARNING DESCRIPTION	HOURS	CURRENT PERIOD AMOUNT	YEAR TO DATE AMOUNT	ACTIONS
BASE	On	regular		\$5,000.00	\$100,000.00	
TOTAL BASE			0.00	\$5,000.00	\$100,000.00	
BONUS	Off			\$5,000.00	\$100,000.00	
TOTAL BONUS			0.00	\$5,000.00	\$100,000.00	
GRAND TOTAL			0.00	\$10,000.00	\$200,000.00	

New In-tool Pop Ups

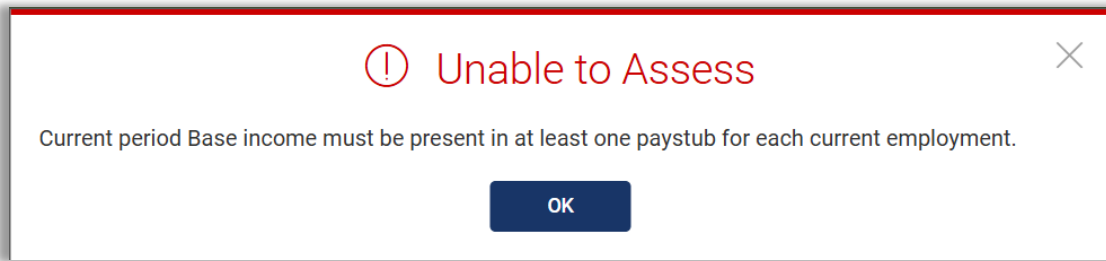
- After the first paystub is entered for an employment, a new popup alerts the user if the Paystub Start Date OR Paystub End Date are indicated as “Not on Paystub” AND the Pay Frequency is indicated as “Not on Paystub”. This popup informs the user that an additional recent paystub is required for calculation.

Information

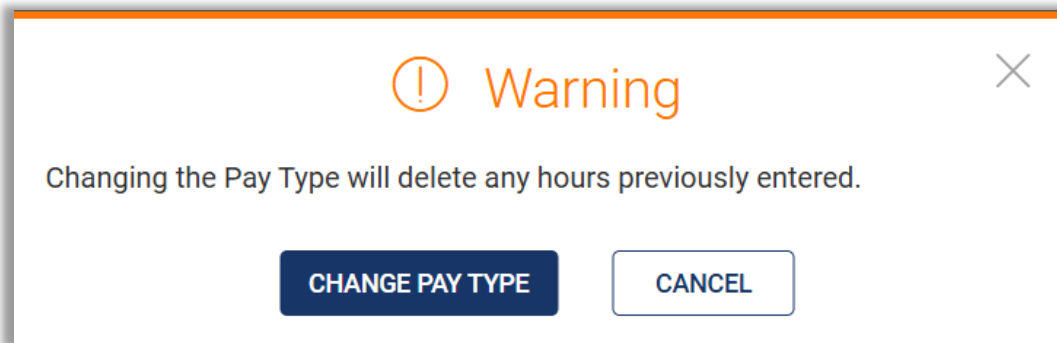
Based on the information from this paystub, the previous paystub is required for calculation. The previous paystub must include base income.

CONFIRM

2. A second new popup tells users earlier in the process if the calculator is unable to assess based on the information provided. If the user attempts to move to the Review Data screen without Current Period Base Income for at least one paystub for each current employment, this popup will appear.



3. The third new popup is related to two of the new fields being added, "Pay Type" and "Hours". If Pay Type is changed to "Salary" from "Hourly", "Other", or "Not on Paystub", any hours previously entered will be deleted.



Ability for TPOs to View R&W Relief Eligibility

TPOs will now be able to view R&W relief eligibility when using the calculator and allowing LPA to automatically retrieve the calculator results, or when associating a calculator identification number with their LPA submission.

New Feedback Messages

TPOs will now be able to view R&W relief eligibility when using the calculator and allowing LPA to automatically retrieve the calculator.

We've added two new Income Calculation Breakdown feedback messages in support of fluctuating and/or hourly income. [View the full list of Freddie Mac Income Calculator feedback messages.](#)

New Income Calculation Breakdown Messages
Message Text
Fluctuating income could not be calculated due to insufficient income history based on the employment start date.
Income not calculated because pay frequency was not determined. Ensure the 2 most recent paystubs are provided.

Visit and bookmark our [Technology Resources webpage](#) for quick access to future release notes and a list of feedback messages. Launch the Freddie Mac Income Calculator [here](#).

