

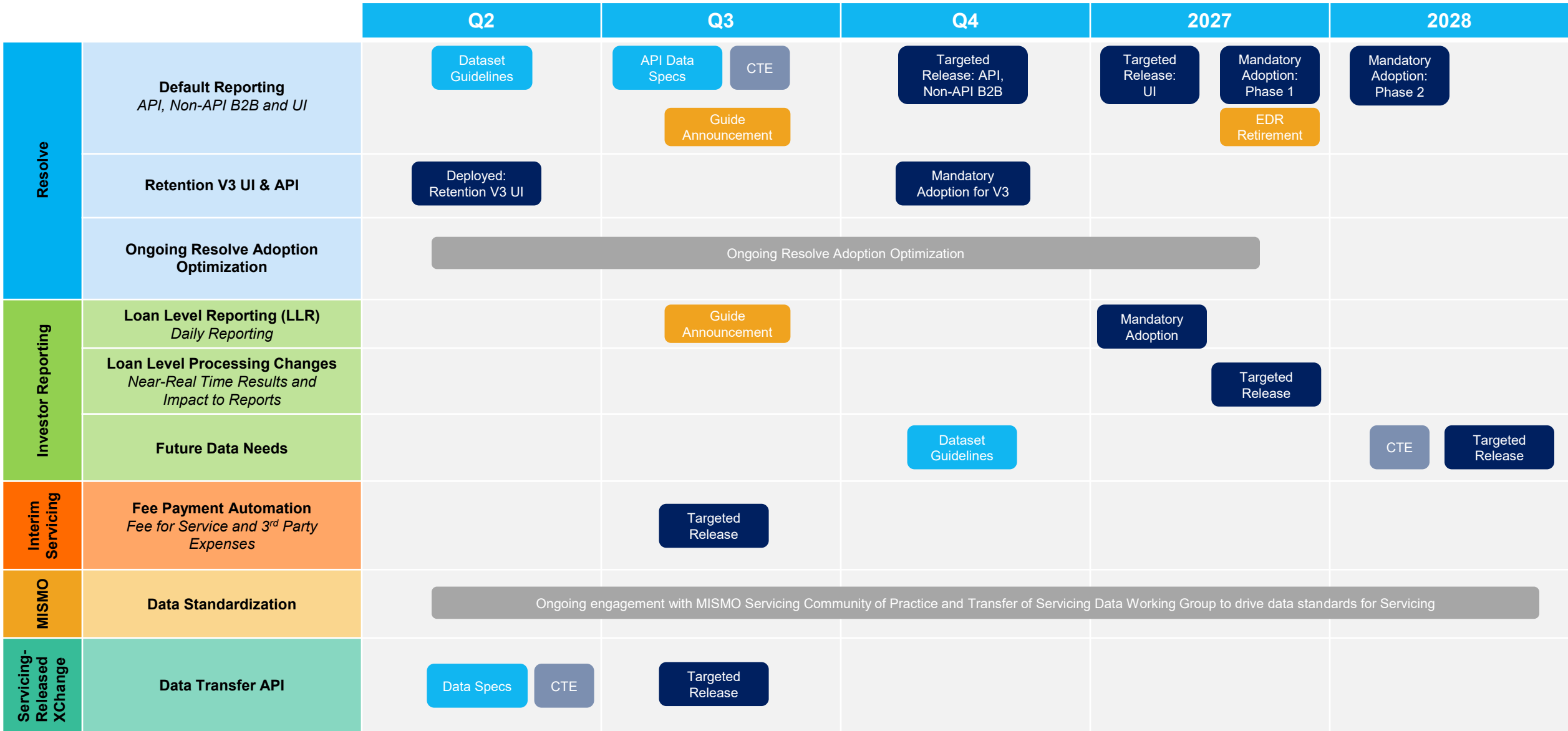
# Freddie Mac Servicing Technology Roadmap



The phased approach enables CTE-based validation, controlled production releases and minimized disruption as capabilities scale across Servicers.

**Legend:**

- Publication: Data Specs/Guidelines
- Release Targeted / Deployed
- Customer Testing Environment (CTE)
- Guide Announcement / Milestone



Disclaimer: This timeline may be adjusted based on evolving business priorities.

Last updated May 2026